

M



# PATTERN POOLE

# THE BAGUETTE



A



*A STYLISH AND TIMELESS HANDBAG.*

**BY MONICA POOLE**  
FABRIC BY ALAURA POOLE

# Baguette Bag

2

## About

A Baguette is a small compact handbag that is carried on a short strap, it was originally designed by Italian fashion company Fendi in 1997. The Baguette was a huge trend in the late 1990s and early 2000s and could be found in an array of colours and textures.

In recent years, the Baguette has made a comeback! This is our version. It's a stylish shape with a top curved zipper, rounded at the bottom, with a side gusset and a gathered strap. It's a basic shape for you to personalise in your own way; add some pockets or change up the strap, it's up to you!

## Size:

Height: 15 cm (6") high. Width: 23.5 cm (9 ¼").

## We would love to see your work

When posting on social media, tag @patternpoole and #patternpoolebaguette

**This little pattern and YouTube tutorial is a gift from us to you, we hope you like it!**

To see the Baguette tutorial and more, head to Pattern Poole TV on YouTube:

[Pattern Poole TV - YouTube](#)

To see our range of PDF patterns head to our website:

<https://www.patternpoole.com/>

Join the Pattern Poole Sewing and Quilting Community on Facebook:

[\(2\) Pattern Poole Sewing and Quilting Community | Facebook](#)



Pattern design and tutorial by Monica Poole.

Filmed and edited by Alaura Poole.

The leopard print fabric is designed by Alaura Poole, only a small yardage was printed for our personal collection, we may have it printed and available for sale in the future.

Copyright Pattern Poole, December 2022

## Requirements

Based on 112 cm (42") wide fabric.

### **Exterior Fabric: 35 cm (14") off the bolt.**

Recommended:

Medium weight woven fabric. Cotton quilting fabric, linen, medium weight canvas. The bag in the step-by-step photos is made from a stiff satin brocade, it was challenging to work with due to the fraying factor, you'll see in the photos that the seams were overlocked.

Avoid fabrics with an open weave that will fray. A thick fabric is not recommended because there are a lot of layers in the top side edge seams, including the exterior fabric, lining, foam interfacing, the strap and the zipper. A thick exterior fabric would make this seam difficult to sew on a domestic sewing machine.

### **Lining: 25 cm (10") off the bolt.**

Recommended:

Medium weight woven fabric. Cotton quilting fabric. Cotton poplin.  
Avoid slippery fabrics.

### **Sew- in Foam Interfacing: 23 cm x 74 cm (9" x 29") rectangle.**

Recommended

ByAnnie's Soft and Stable (The easiest to sew, great for beginners).

Matilda's Own, Bosal, Vlieseline Style-Vil, Pellon Flex Foam.

One 18" x 58" pack will make 4 Baguette Bags.

Fusible foam interfacing is not recommended.

### **Open Ended Jacket Zipper: 40 cm (16").**

An open-ended jacket zipper has thicker teeth and wider tape than a regular dress zipper, making it more durable in a bag. It's also easy to work with because it can be separated during the bag construction as you'll see in the video.

Avoid zippers with chunky or metal teeth because they are difficult to sew through, especially in the thick top side edge seams of this bag.

### **25 mm (1") wide polyester webbing for strap: 50 cm (20") Or length of your choice.**

For a non-gathered strap you'll need interfacing, turn to page 14 for the details.

### **Template plastic or similar for the bag base.: 4.5 cm x 16.5 cm (1 ¾" x 6 ½") rectangle.**

## Additional Requirements

Pins, large safety pins and general sewing supplies

Fabric scissors

Rotary cutter, ruler and cutting mat

Wonder Clips (Wonder Clips are shown in the step-by-step photos)

Sewing machine

Regular all-purpose polyester thread

Size 80 or 90 jeans needle

Zipper foot

Standard sewing foot or some machines may need to use a walking foot.

# Baguette Bag

4

## Seam allowance

All seams have been allowed on the pattern pieces, the seam allowance for constructing the bag is 1 cm (3/8") and 6 mm (1/4") for the strap.

## Sewing tip:

Use a size 80 or 90 jeans needle with a stitch length of 3 unless otherwise instructed.

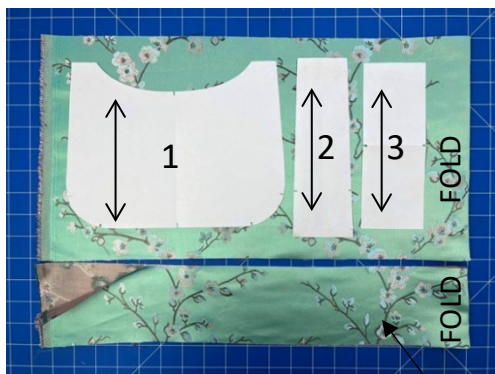
## Step 1: Cutting out.

You'll find the pattern pieces on the last pages of the pattern. Print them to ACTUAL size and measure the 25 mm (1") test box to check size is correct. Cut out the paper pattern pieces.

## Exterior Fabric

Fold the exterior fabric, wrong sides facing, with the opposite selvages together. Pin pieces 1, 2 and 3 onto the fabric and cut out. (You only need 1 of piece 3, cutting out like this is faster, but you could cut this piece on a single layer of fabric if you like).

Mark all notches with a fabric marker or by making a small 3mm (1/8) snip into the fabric with the tip of your scissors.



## Exterior Fabric Strap

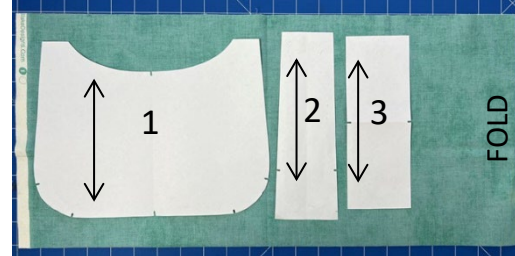
From the remaining fabric, cut a 9 cm (3 1/2") strip across the width of the fabric for the strap. Cut the strip to a length of 105 cm (41").

## Lining

Fold the lining fabric, wrong sides facing, with the opposite selvages together.

Pin pieces 1, 2 and 3 onto the fabric and cut out.

Mark all notches.



## Foam Interfacing

Lay the foam interfacing in a single layer. Use the exterior bag fabric pieces as a pattern. Position each piece on top of the foam interfacing with the right side facing up. Hold in place with pins and cut neatly around the edge of each piece. Leave the pieces pinned to the foam interfacing, ready for the next step.

Mark all notches.



## Step 2: Basting.

Take the exterior bag pieces that are pinned together with the foam interfacing and baste them together with a large stitch length of 5.0 and a 1 cm (3/8") seam allowance as follows: (The 1 cm (3/8") seam allowance for the basting may seem wide, but you'll see why soon).

### Side panels and base:

Only baste the long edges.

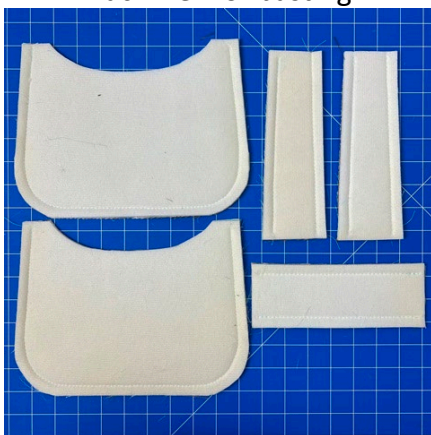
### Front and back bag pieces:

Baste all edges except for the top curve.

Front view of basting.



Back view of basting



### Note:

If you're new to sewing, the term basting is to hold layers together with a large stitch length. Do not back-tack when basting so that the stitches can be easily removed if required.

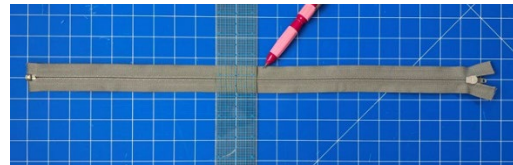
## Step 3: Add an optional bag badge or tag.

Choose the side of the exterior bag that you would like to be the front. Add an optional handmade badge or a sew on label, there are many available on Etsy and they all attach in different ways. See how we attached our bag badge in the video.

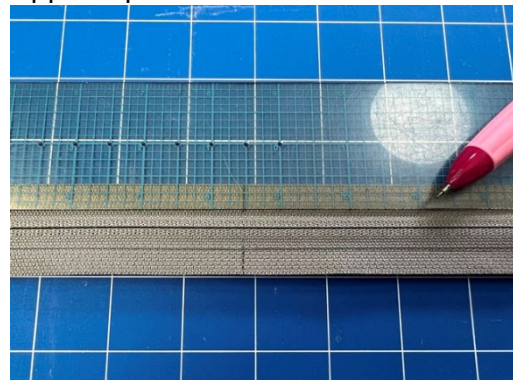


## Step 4: Attach the zipper.

Measure the zipper from the zipper pull to the end. Divide by 2 to find the centre. Mark the centre onto the wrong side of the zipper by drawing a line from one side of the zipper tape to the other side.



To make things easy, measure and mark the 1 cm (3/8") seam allowance line with a ruler onto the wrong side of the zipper, marking on both sides of the zipper tape.



# Baguette Bag

6

Take the exterior bag front and place the zipper right sides together with the top edge.

*If you wear your bag on the right, position the zipper pull on the right edge, if you wear your bag on the left, position the zipper pull on the left edge.*

With the wrong side of the zipper facing up, align the centre mark of the zipper with the centre notch at the top edge of the bag. Pin from the centre out to both side edges curving the zipper tape so that it is level with the top edge of the bag.

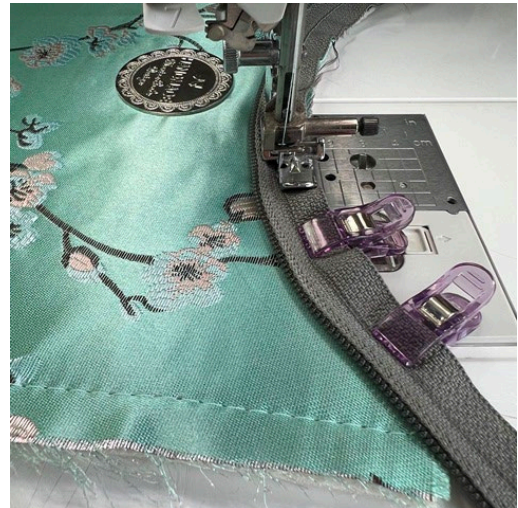


*You can expect the zipper tape to be wavy on the outer edge, but smooth at the 1 cm (3/8") line.*

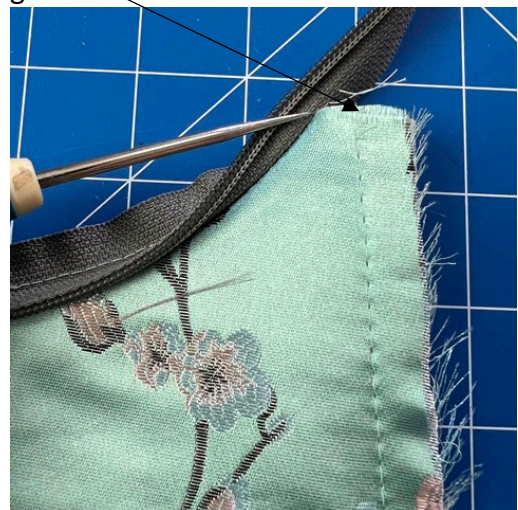
Unzip the zipper almost to the end but do not separate yet.



Attach your zipper foot with the needle positioned on the left side. Move your needle position further to the left if necessary, so that you can easily sew on the marked line. (Refer to the photo at the top of the next column).



Make sure that the zipper follows the top curve of the bag and that after this step it measures 2 cm (3/4") from the zipper to the side edge of the bag. This space is necessary for sewing on the gusset.



Zip up the zipper and place the front bag right sides together with the back bag. Pin the opposite side of the zipper tape to the top edge of the back bag piece. Once again aligning the centre and pinning to the outer edges. Make sure that the side edges of the bag are level.

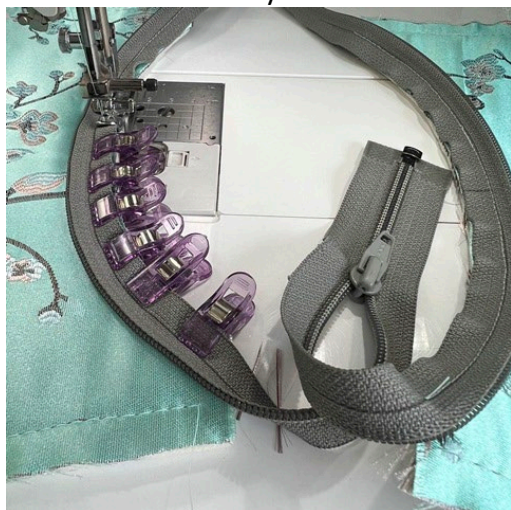
(Refer to the photo on the following page).



Unzip the zipper again.



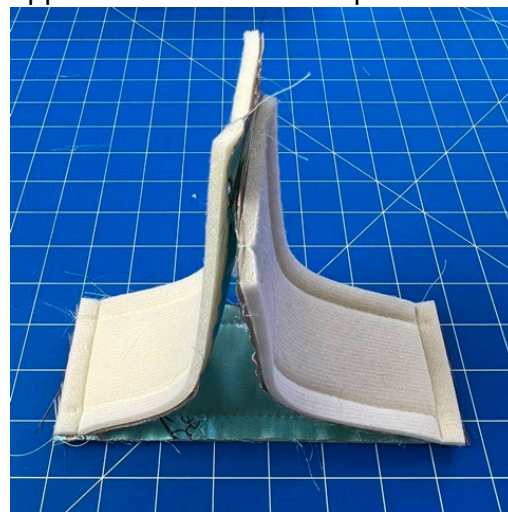
Sew in the same way as before.



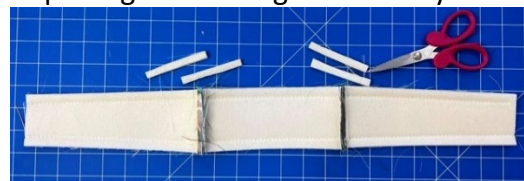
You can now undo the zipper to separate the front and back of the bag for the next step.

## Step 5: Construct the gusset.

To make the gusset, sew the wider ends of the side panels onto the opposite ends of the base piece.



Trim away the foam interfacing from the seams to reduce the bulk, unpicking the basting if necessary.



To hold the seam allowance flat, working from the right side, push the seams towards the base and topstitch 3 mm (1/8") away from the seams.



## Step 6: Attach the gusset.

To do this, pin the bottom of the front bag piece right sides together with 1 side of the gusset, aligning the centre notches.



# Baguette Bag

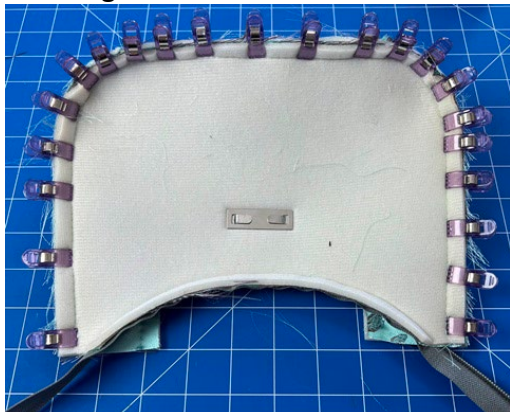
Next, bend both ends of the gusset around to meet the top edges of the back front and hold in place with pins.



Pin all straight sections of the bag to the gusset, saving the curves until last.



The curves will mould into the side gusset. The fabric to be wavy on the outer edge, but flat at the basting stitching line.



*Note: If using pins, pin across ways with the head of the pin extending to the outer edge, this way they can be easily removed as you sew.*

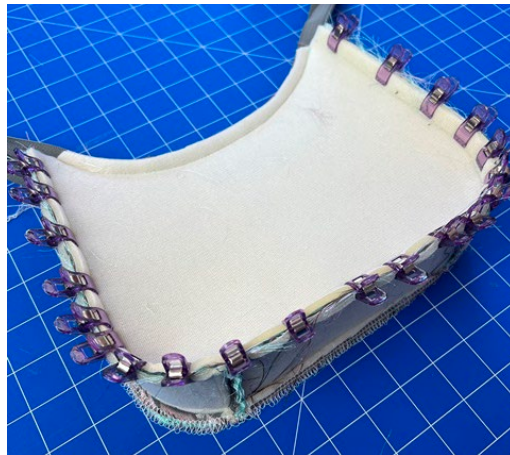
Turn the bag over so that the gusset is on top and sew, stitching exactly on top of the basting stitching line.



Because the basting is the same as the seam allowance, you can now easily trim away the foam interfacing from the seam allowance to remove the unnecessary bulk.



Pin and sew the back bag piece onto the other side of the gusset in the same way, once again, trimming away the foam interfacing from the seam allowance.





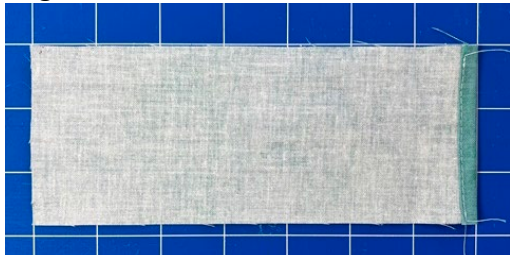
# Baguette Bag

Turn the bag through to the right side and unpick any visible basting stitches.

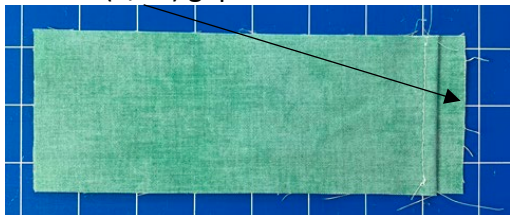


## Step 7: Make the firm base pocket in the lining.

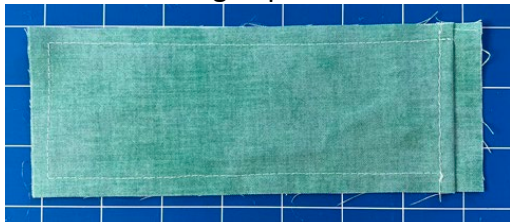
Take one of the lining base pieces and hem one short end by pressing over 6 mm (1/4") then over again by 6 mm (1/4"). Sew close to the inner folded edge.



Place this piece on top of the other base piece, **both** with the right side facing up. Make 1 end level, leaving a 12 mm (1/2") gap at the other end.



Sew around the edge of the base with a 6 mm (1/4") seam allowance, leaving the hemmed edge open.



Sew the wider ends of the side panels onto the opposite ends of the base piece being careful not to catch in the hemmed edge. Press the seams open.



Turn to the right side and you will see the opening for the base pocket. The firm base will be slipped into the pocket when the bag is complete.



## Step 8: Construct the lining.

Construct the lining in the same way as the bag exterior leaving an opening on one side at the bottom edge, between the base seams.



Press over the seam allowance of the opening, this will make it easier to sew closed in the final step.

# Baguette Bag

## Step 9: Make the strap.

*(Turn to page 14 for a non-gathered strap)*

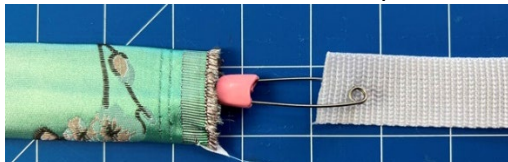
Fold the strap lengthwise with the right sides facing, sew down the long raw edge with a 6 mm ( $\frac{1}{4}$ " ) seam allowance. Turn the strap through to the right side with a large safety pin or using the ribbon trick as shown in the video.



Position the seam in the centre, pressing the seam to one side. This will be the back of the strap.



Thread the webbing through the strap with a large safety pin. When the tail end is level with the start of the fabric tube, stitch across to hold in place.



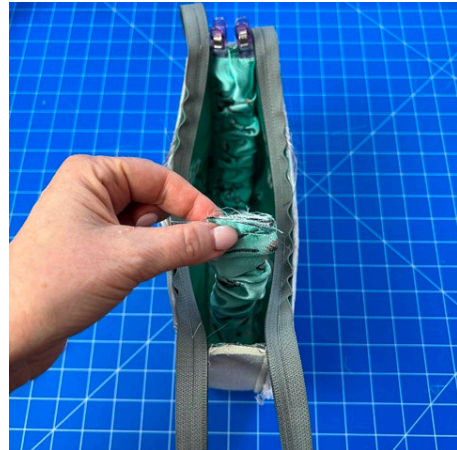
Continue threading the webbing through the fabric tube gathering up the fabric as you go. When you reach the opposite end, once again, stitch across to hold it in place. (Refer to photo in the next column).



Turn the exterior bag so that the right side is facing in.

Pin one end of the strap to the top edge of the bag at the gusset with the right side of the strap facing the right side of the bag. (The seam of the strap will be facing up).

Pin the other end of the strap to the opposite side of the bag.



Sew the ends of the strap in place with a 1 cm ( $\frac{3}{8}$ " ) seam allowance, making sure that you don't catch in the gusset seam allowance.



# Baguette Bag

## Step 10: Attach the lining to the exterior bag.

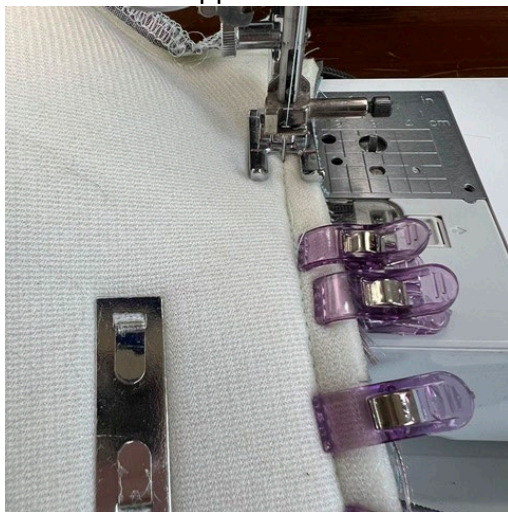
With the right side of the exterior bag facing in, and the right side of the lining facing out, slip the lining inside the exterior bag.



Pin together at both top curved edges.



Sew across the top curved edges with the foam interfacing on top, sewing exactly on top of the stitching line that attached the zipper.



If you have a free arm on your sewing machine, slip the bag over the free arm to sew.



If you don't have a free arm, turn your bag the other way so that the foam interfacing is on the inside of the bag, this will make it easy to stitch along the zipper stitching line.



Trim the foam interfacing away from the seam allowance.



# Baguette Bag

Clip into the curved edge: Clip at 2 cm (3/4") intervals, clipping halfway into the seam.

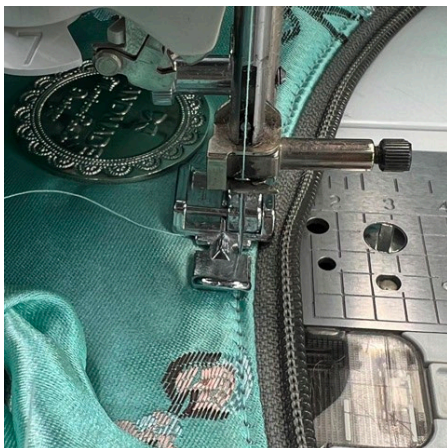


Turn the bag through the opening in the lining so that the lining is on the outside of the bag.

Press the exterior and lining fabric away from the zipper and hold in place with pins.



Top stitch along the top seam. To do this, attach the zipper foot with the needle positioned on the right side. Start and finish the topstitching 12 mm (1/2") away from the raw ends, stitching 3 mm (1/8") away from the seam.



**Step 11: Sew across the top ends of the gusset.**

Turn the bag so that the right side is facing out and connect the zipper. Zip up the zipper to a quarter of the way.



Now turn the bag so that the foam interfacing is on the outside.



Working on the closed end zipper side, place the top edge of the lining and exterior gusset right sides together with the zipper sandwiched in between.



# Baguette Bag

13

Pin the seam allowances together to hold in place.

Lining view:



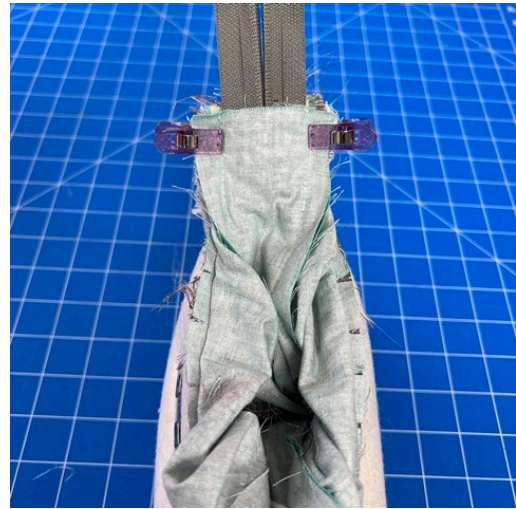
Foam interfacing view:



Working with the foam interfacing side on top, sew across the top edge of the gusset, sewing on the 1 cm (3/8") stitching line that attached the strap. Reversing at the beginning and end to secure.



Do the same to the opposite side, holding the open ends of the zipper together.



Trim away the excess ends of the zipper and trim the foam interfacing from the seam allowance.



Turn the bag through to the right side.

# Baguette Bag

## Step 12: Finish the bag.

Fold in the seam allowance of the opening in the lining and pin the edges together. Stitch together by sewing close to the edge.



Round off the sharp corners of the template plastic rectangle and slide it into the base pocket. There is no need to stitch the pocket closed, this way you can remove the plastic base if you want to wash your bag.



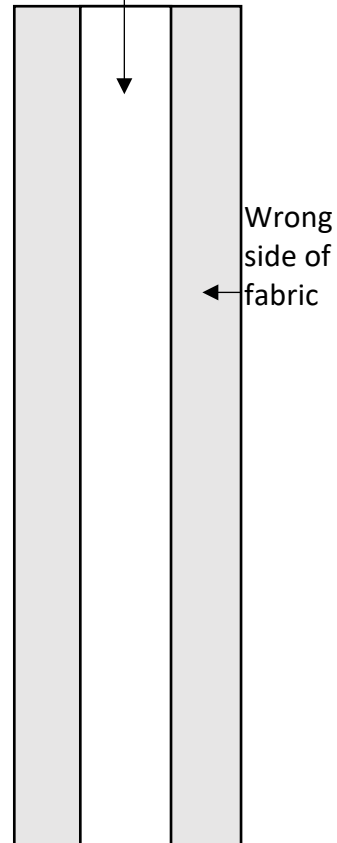
Tuck the lining down into the bag and your bag is now complete!

## Optional 1 1/4" wide non-gathered strap.

Cut a 3" wide strip of fabric by your desired length.

Cut a 1 1/4" wide strip of light to medium weight iron on interfacing.

Iron the interfacing onto the wrong side and in the centre of the fabric strip.

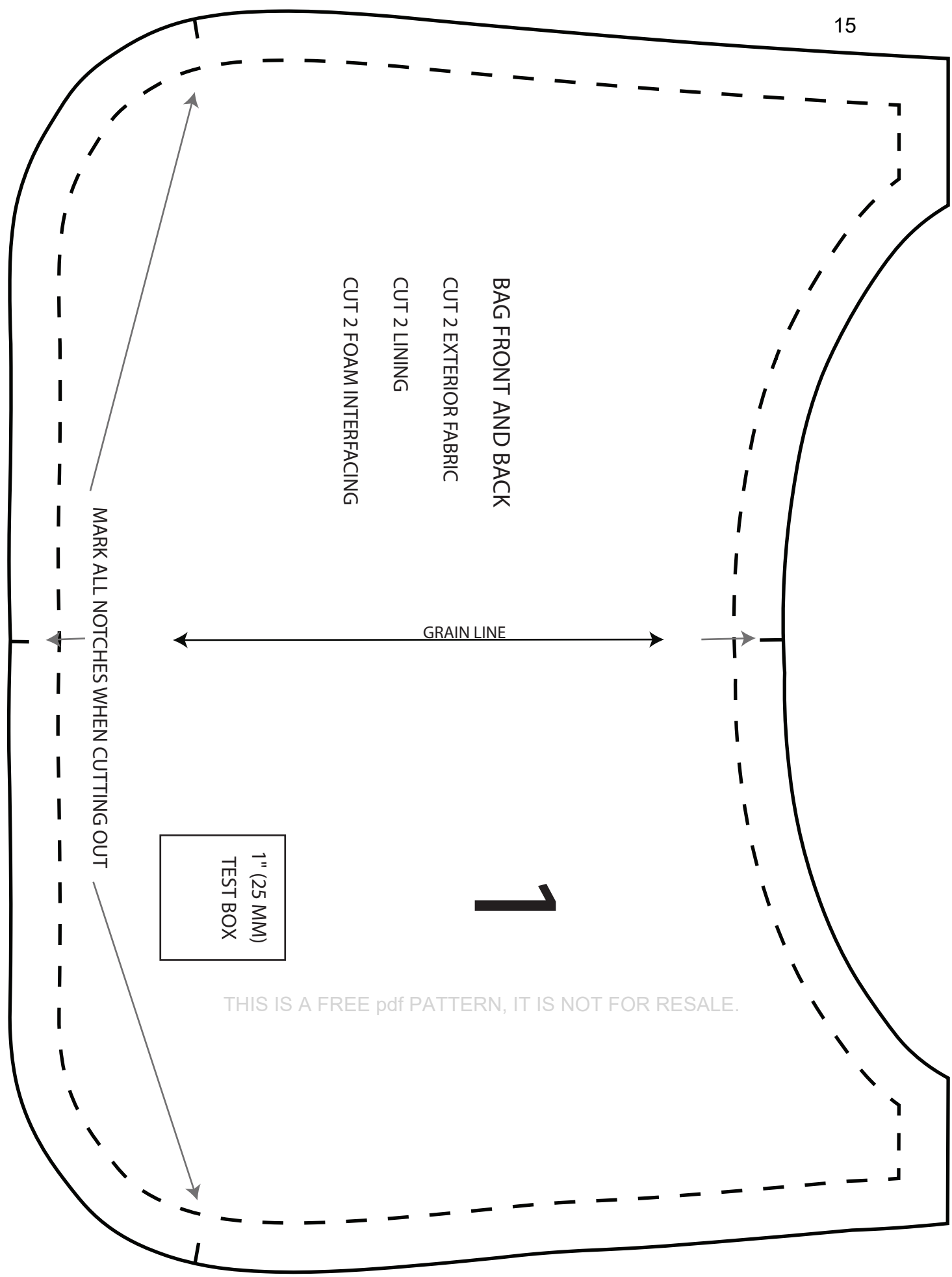


Fold the strip in half lengthwise with the right sides facing. Sew down the long raw edge with a 1/4" seam allowance.

Turn the strap to the right side. Position the seam in the centre, pressing the seam to one side. This will be the back of the strap.

Turn the strap over and top stitch as many rows of sewing as you like.

Attach the strap to the bag in the same way as instructed in the pattern and the tutorial.



BAG FRONT AND BACK  
CUT 2 EXTERIOR FABRIC  
CUT 2 LINING  
CUT 2 FOAM INTERFACING

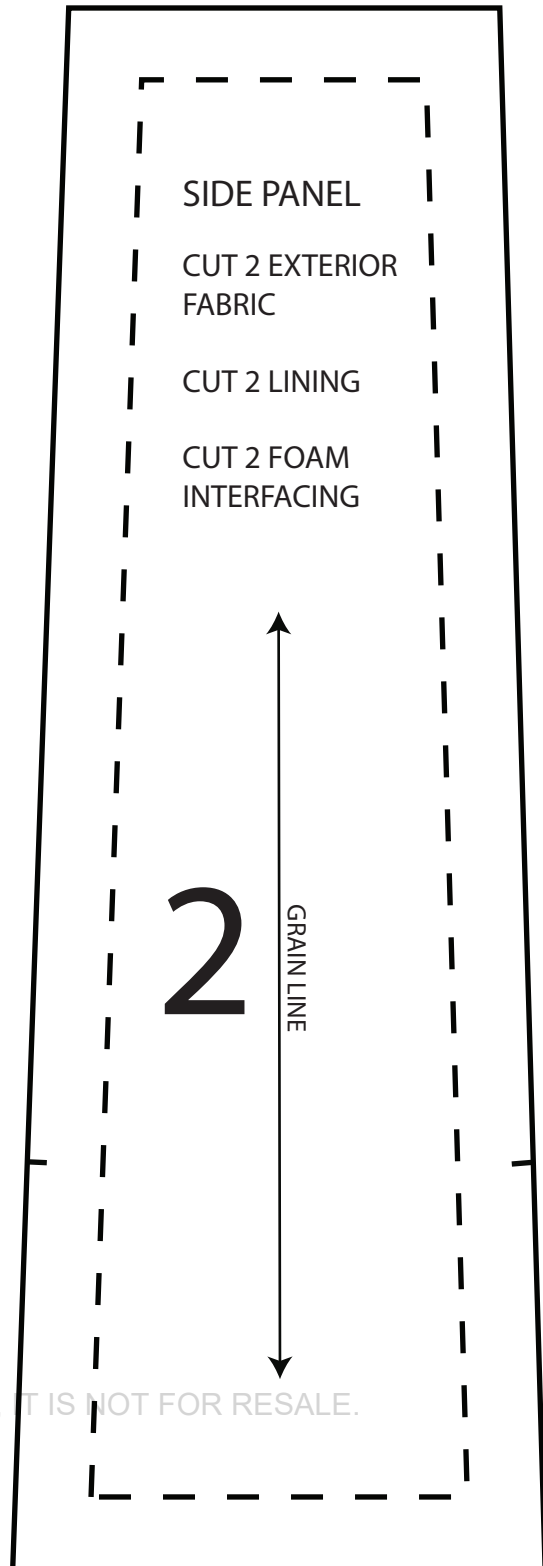
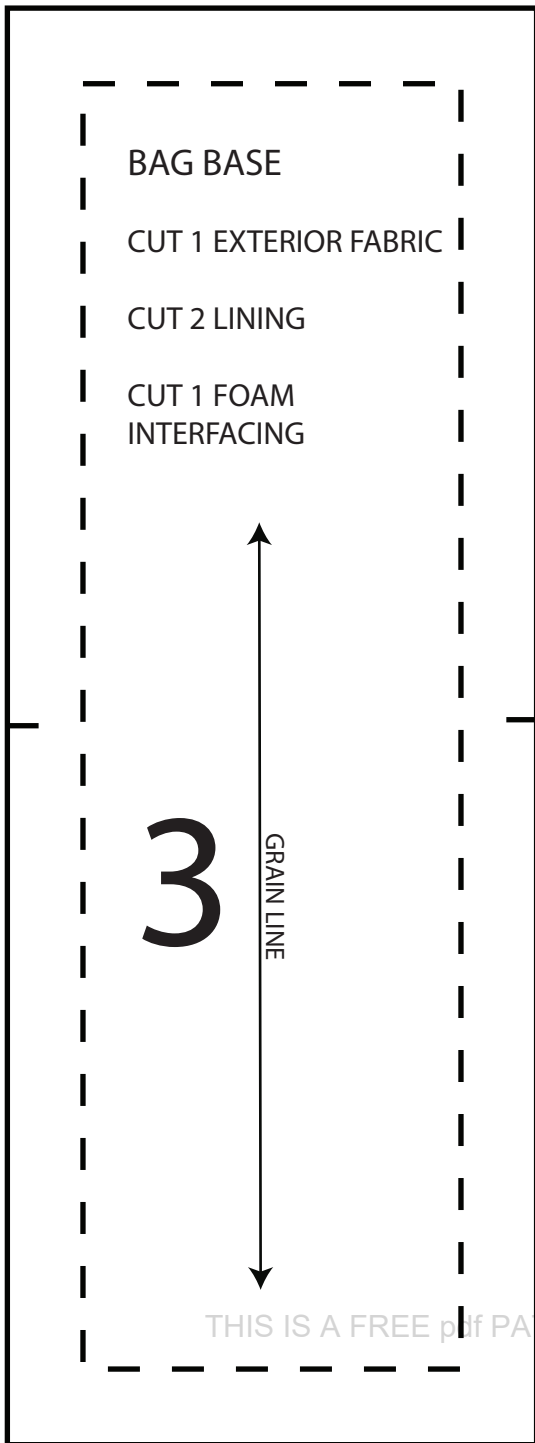
GRAIN LINE

1

1" (25 MM)  
TEST BOX

MARK ALL NOTCHES WHEN CUTTING OUT

THIS IS A FREE pdf PATTERN, IT IS NOT FOR RESALE.



1" (25 MM)  
TEST BOX

\*\*MARK ALL NOTCHES WHEN CUTTING OUT

— ← NOTCH SYMBOL